

The trail was named after the mythological forest nymph Atalante. It is about 9km long. It starts at Troodos Square and ends at the Chrome Mine camp, at an altitude of 1 750 m. The duration of the walk is 3-4 hours. You may return back to the Troodos Square either following the main asphalted Prodromos-Troodos road or a forest trail east of the said road (follow the signs).

The change in scenery and variety of subjects will give you the opportunity to explore the forest, the flora, the fauna and the rocks. From various viewpoints you will be able to see many areas and villages of the Lemesos, Pafos and Lefkosia districts.

At about 3 km from Troodos Square you will come across a spring of high quality drinking water and at various points, wooden benches to rest.

Explanations about the numbered points of the trail are given below:

1. **BLACK PINE** *Pinus nigra* ssp. *pallasiana*. It is about 400 years old.
2. **WELLINGTONIA** *Sequoiadendron giganteum*. Introduced from the United States. In its country of origin it may reach a height of 100 m. It is one of the tallest trees on earth.
3. **CYPRUS CEDAR** *Cedrus libani* ssp. *brevifolia*, endemic. Natural stands may be found only in the Cedar Valley.
4. **ROYAL OAK** *Quercus infectoria* ssp. *veneris*.
5. **BARBERRY** *Berberis cretica*. It appears in interdependence with black pine.
6. **A VEIN OF PYROXENITE** 3 - 4 cm thick in harzburgite.
7. **ROCKROSE** *Cistus creticus* var. *creticus*. In the past, people extracted ladanum - an aromatic and medicinal substance - from its leaves. Until the 18th century, Cyprus exported ladanum.
8. **WILD PLUM TREE** *Prunus domestica*.
9. **WILD PEAR TREE** *Pyrus syriaca*.
10. **ABANDONED LINE** for the ascent of skiers.



Pinus nigra ssp. *pallasiana*

11. **GOLDEN OAK** *Quercus alnifolia*, endemic. (The national tree of Cyprus).
12. **EVERLASTING** *Helichrysum italicum*.
13. **CALABRIAN PINE** *Pinus brutia*. A rare species at such altitude. Abundant in altitudes below 1 200 metres.
14. **TEREBINTH** *Pistacia terebinthus*.
15. **YOUNG PLANTATION** of cedars, established in 1962. It seems that cedars can thrive in the climate of the area.
16. **PTEROCEPHALUS** *Pterocephalus multiflorus* ssp. *multiflorus*, endemic.
17. **CYPRUS GERMANDER** *Teucrium cypricum* ssp. *cypricum*, endemic.
18. **TROODOS MILK VETCH** *Astragalus echinus* var. *chionistrae*, endemic.
19. **ANTI- EROSION** works carried out in 1962.
20. **VIEWPOINT** The Presidential residence with the large Wellingtonia (*Sequoiadendron giganteum*) and the wine producing villages of Koilani and Omodos can be seen.
21. **TROODOS DWARF GORSE** *Genista sphacelata* ssp. *crudelis*, endemic of the Park.
22. **STRAWBERRY TREE** *Arbutus andrachne*. A very common shrub in Cyprus. Its red berries are a very appetising food for birds.
23. **SUMACH** *Rhus coriaria* used in tanning.
24. **TROODOS SPURGE** *Euphorbia cassia* ssp. *rigoi*, endemic of Troodos.
25. **VIOLET** *Viola sieheana*. Spring with drinking water.
26. **BLACKBERRY BRAMBLE** *Rubus sanctus*.
27. **WATER** for wildlife.
28. **VIEW POINT** Akrotiri and Pissouri villages.
29. **OLD METHOD** of producing resin.
30. **DUNITE** Dunite lens with thin grains of chromite (black metallic colour) in harzburgite.
31. **VIEW POINT** Pera Vassa, Vouni tis Panagias. Here you may observe a characteristic example of soil erosion due to deforestation.
32. **TROODOS SAGE** *Salvia willeana*, endemic of the highest parts of Troodos.
33. **DEAD** decayed pine.
34. **RUSTY-BACK FERN** *Asplenium ceterach*. Ferns are among the most ancient plants on earth dating 365 million years.
35. **HARZBURGITE** with dunite. Dunite lens in harzburgite. The contact between the two rocks forms a curved line. The two rocks are eroded differently. The eroded surface

of dunite is smooth and uniform, while that of harzburgite is uneven with small reliefs (pyroxene grains which are more resistant to erosion).

36. **CHROMITE** grains developed in harzburgite. Large grains of chromite (black metallic colour) concentrated in a dunite lens (smooth surface of an orange-brown colour) which is included in harzburgite (uneven surface of an orange-brown colour).
37. **HADJIPAVLOU MINES** Entrance to the chrome mine tunnel. The mineral was mined underground without disturbing the natural environment in the way asbestos mining did. The exploitation of the layer started in 1950, with tunnels, and continued until 1954. Work started again in 1973 and stopped in 1982. A total of 15 000 tons of high concentration mineral was exported.
38. **CYPRUS MINT** *Mentha longifolia* ssp. *cyprica*, endemic.
39. **DOG ROSE** *Rosa canina* var. *dumetorum*.
40. **FOETID JUNIPER** *Juniperus foetidissima*. It has a diameter of 120 cm and a height of 12,5 m and is about 600 years old. It is one of the biggest foetid juniper trees in Cyprus.
41. **PYROXENITE** with oversize crystals of green colour pyroxene.
42. **TROODOS ALYSSON** *Alyssum troodi*, endemic of Troodos. Once used in the preparation of medicine against rabies.
43. **MASSIVE HARZBURGITE**.
44. **MOSSES** *Bryophyta*. Next to it you can see a small artificial dry masonry dam that is silted up.
45. **A PURE STAND** of foetid juniper (*Juniperus foetidissima*) about 30 hectares, the only one of its kind in Cyprus.
46. **AN ALTERNATION** of thin layers of pyroxenite and dunite.
47. **FOETID JUNIPER** *Juniperus foetidissima* struggling to survive.
48. **VIEWPOINT** Throni tis Panagias of Kykko, Prodromos and Lemithou villages.



Rosa canina var. *dumetorum*



Juniperus foetidissima

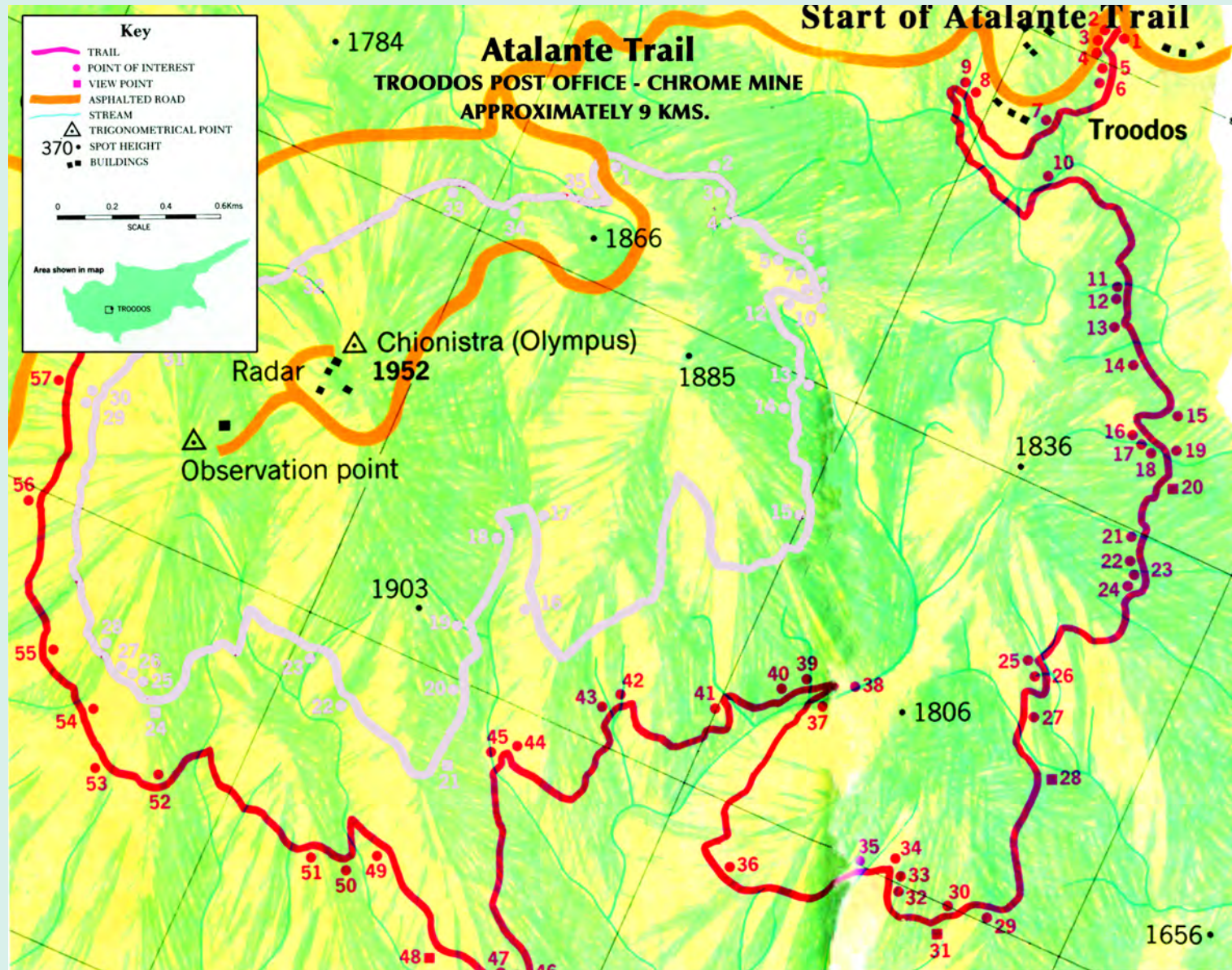
Please keep in mind the following:

- ⇒ Lighting of fire in, or near, the forest is strictly prohibited.
- ⇒ Avoid smoking or eating during your walk.
- ⇒ Do not use bicycles or motorbikes on the trail.
- ⇒ Do not cut plants and do not disturb wildlife in any way.
- ⇒ Keep on the trail.

If you have any remarks, suggestions or questions you are welcome to contact the Forest Station at Platania, tel. 22922454, 25552580 or the headquarters of the Department of Forests, tel. 22805528 at Lefkosia. In case of a forest fire or emergency only, call at once 1407 (24 hours).

- 49. **FERN** *Pteridium aquilinum*. This fern is used as an indication of good quality soil. On tree trunks you will notice that there are lichens. (The lichens are a symbiosis of fungi and algae).
- 50. **WHITE BEAM** *Sorbus aria* ssp. *cretica*. In wintertime it is full of beautiful red berries.
- 51. **PRICKLY JUNIPER** *Juniperus oxycedrus*.
- 52. **PEGMATITIC GABBRO** a) Pegmatitic gabbro with oversize pyroxene crystals (up to 5 cm) and plagioclast. b) Diabase dyke.
- 53. **A BLACK PINE STRUCK BY LIGHTNING** *Pinus nigra* ssp.

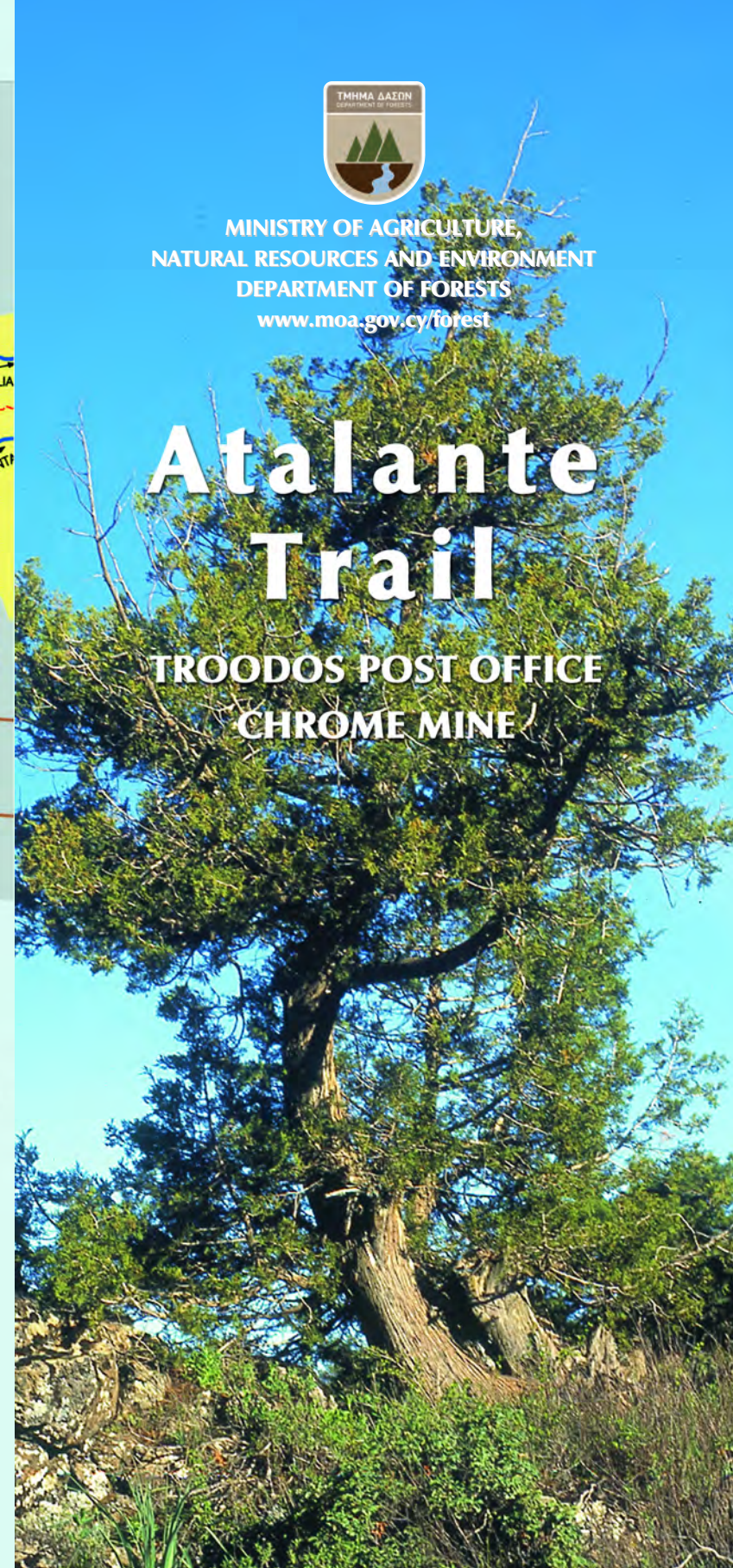
- pallasiana*. Tall trees attract lightning which often causes forest fire.
- 54. **AN IMPRESSIVE DUNITE** with intense cracks in two directions vertical to each other.
- 55. **WILD COTONEASTER** *Cotoneaster racemiflorus* var. *nummularius*.
- 56. **ROSE BAY WILLOW HERB** *Epilobium angustifolium*.
- 57. **MIDDLE AGE STAND** of black pine. This site has a north facing aspect, where the conditions, at least in the Mediterranean, are more favourable for plants, mainly because of a higher level of humidity.



REFERENCE	NATURE TRAILS
— MAIN ROAD	1. ARTEMIS (7 Km)
— LOOSE SURFACE ROAD	AROUND CHIONISTRA
— NATURE TRAIL	2. ATALANTI (12 Km) (CIRCULAR)
— NATURE TRAIL ALONG ROAD	POST OFFICE OF TROODOS—CHROMIUM MINE—TROODOS SQUARE
△ CAMPING SITE	3. PERSEFONI (3 Km)
⊗ PICNIC SITE	TROODOS—MAKRIA KONTARKA
● VISITOR CENTRE	4. KALIDONIA (3 Km)
□ PARKING PLACE	KRYOS POTAMOS—KALIDONIA WATERFALL—PSILO DENTRO
● STARTING POINT	5. KAMPOS TOU LEVADIU (3 Km) (CIRCULAR)
● FOREST STATION	6. PSILO DENTRO—VRYSES—KAMINOUDIA—POUZIARIS—PSILO DENTRO (8 Km)
UP TO 1000 m	7. MYLLOMERIS WATERFALL (1.2 Km)
UP TO 1300 m	8. KALOPANAGIOTIS—OIKOS (1.5 Km)
UP TO 1600 m	9. KAMPOS TOU LEVADIU—AGIOS NIKOLAOS TIS STEGIS (9 Km)
OVER 1600 m	10. GERAKIES—KAVALLOS (3 Km) (CIRCULAR)
	11. LEVADI PHILIPPOU (For disable people)(1.2 Km)
	12. KANNOURES—KAKOPETRIA (7 Km)
	13. PRODROMOS DAM—ZOUMI—STAVROULIA (5.6 Km)
	14. EUROPEAN TRAIL "E4"

Printed on recycled paper

P.I.O. 38/2012-5.000
Published by the Press and Information Office
Printed: Zavallis Litho Ltd



MINISTRY OF AGRICULTURE,
NATURAL RESOURCES AND ENVIRONMENT
DEPARTMENT OF FORESTS
www.moa.gov.cy/forest

Atalante Trail

TROODOS POST OFFICE
CHROME MINE